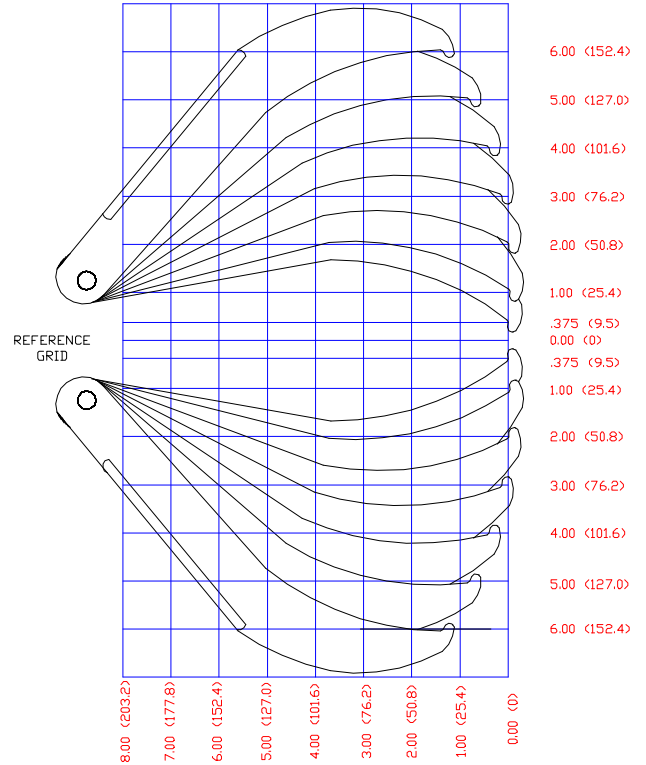
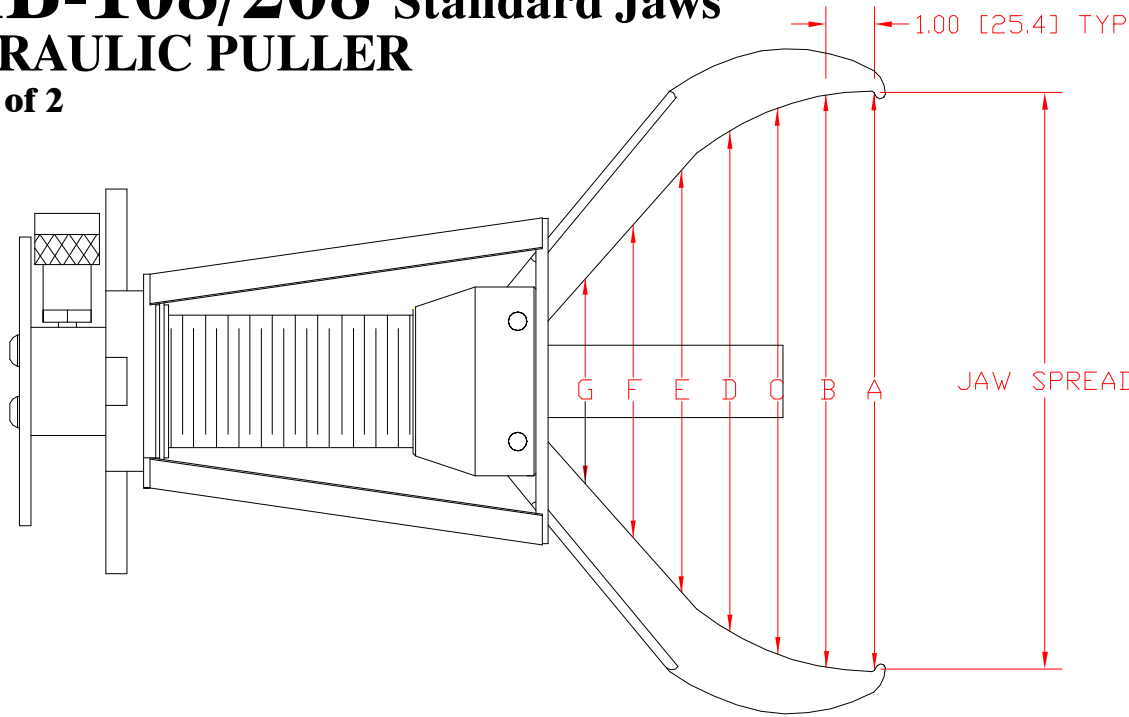


PHB-108/208 Standard Jaws HYDRAULIC PULLER

Page 1 of 2



JAW SPREAD	DIM A	DIM B	DIM C	DIM D	DIM E	DIM F
0.75 (19.0)	0.99 (25.1)	2.22 (56.3)	2.97 (75.4)	3.33 (84.5)	3.18 (80.7)	2.59 (65.7)
2.00 (50.8)	2.05 (52.1)	3.11 (78.9)	3.74 (94.9)	3.99 (101.3)	3.73 (94.7)	2.90 (73.6)
4.00 (101.6)	4.14 (105.1)	4.87 (123.6)	5.28 (134.1)	5.33 (135.3)	4.89 (124.2)	3.56 (90.4)
6.00 (152.4)	6.10 (154.9)	6.66 (169.1)	6.83 (173.4)	6.65 (168.9)	5.95 (151.1)	4.08 (103.6)
8.00 (203.2)	8.06 (204.7)	8.35 (212.0)	8.30 (210.8)	7.90 (200.6)	6.93 (176.0)	4.47 (113.7)
10.00 (254.0)	10.15 (257.8)	10.18 (258.5)	9.85 (250.1)	9.12 (231.6)	7.71 (195.8)	4.48 (113.7)
12.00 (304.8)	12.21 (310.1)	11.99 (304.5)	11.36 (288.5)	10.29 (261.3)	8.35 (212.0)	4.08 (103.6)

POSI LOCK MODELS PHB108/PHB208 GEAR AND BEARING PULLERS

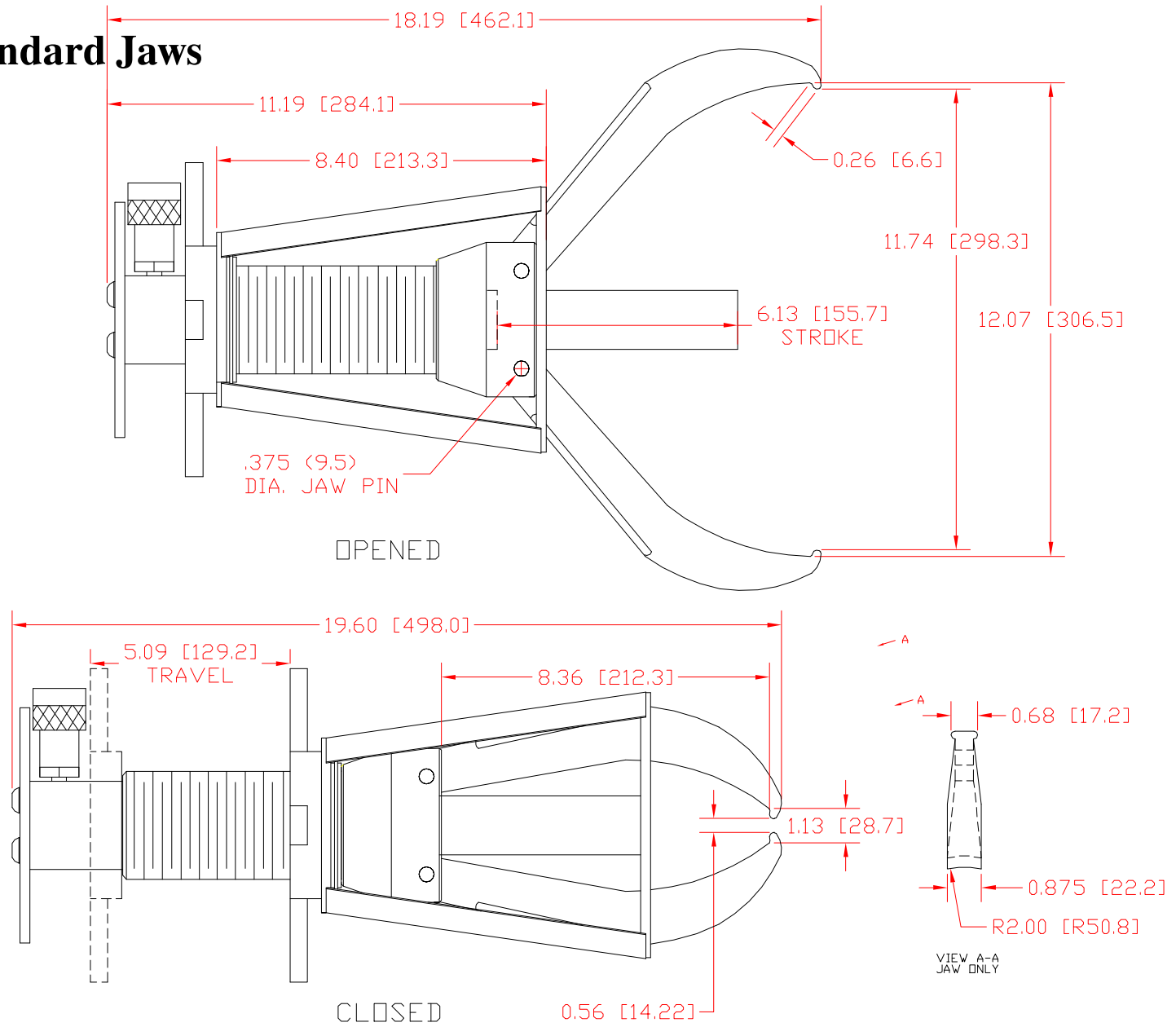
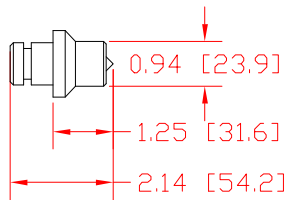
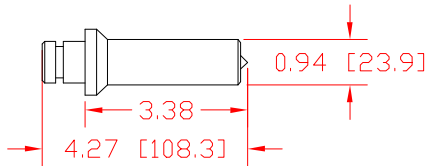
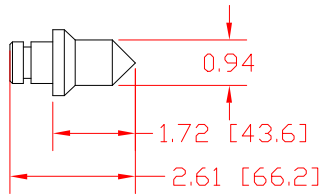
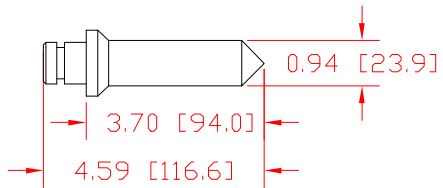
MODEL PHB108	MODEL PHB208
10 TON (9.3 METRIC TONS)	10 TON (9.3 METRIC TONS)
3 JAW - STANDARD	2 JAW - STANDARD
RAM STROKE 6.13 (155.7)	RAM STROKE 6.13 (155.7)
REACH 8.00 (203.2)	REACH 8.00 (203.2)
SPREAD .75 (19.0) TO 12.0 (304.8)	SPREAD .75 (19.0) TO 12.0 (304.8)
WT. 16.1 (7.30kg)	WT. 14.1 (6.40kg)
RATED FOR 10000 PSI	RATED FOR 10000 PSI

PHB-108/208 Standard Jaws

HYDRAULIC PULLER

Page 2 of 2

RAM POINT SET



CLOSED